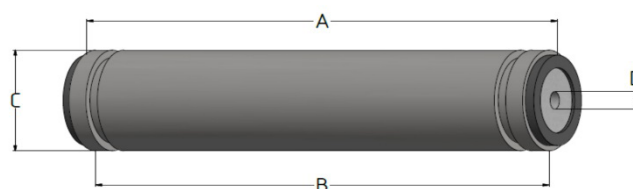


## R1-8640AH-8X0D Electrocoating Ultrafiltration (UF) Unidesign<sup>+</sup> Element

### Product Description\*

Membrane Material / separation range	PS - Polysulfone / 20kD
Item ID	R1-8640AH-8X0D
Membrane Area	315 Å <sup>2</sup> (29.3 m <sup>2</sup> )
Spacer	31 mil (0.76 mm)
Construction / Housin	PVC-C
O-Ring Permeate	2x EPDM (Silicone Free)
Seal	None, Bypass Glued

\*All components of construction are silicone free



### Packaging Detail

Element Shipping Weight	Element Working Weight	Element Packaging
50 lb (23.0 kg)	90 lb (40.8 kg)	1,110 x 350 x 300 mm (27.3 kg)

Our Unidesign module has a new membrane for Demi Water Recycling Systems or Permeate Recovery. This element can be used to create E-Coat permeate with 15%-20% lower total solids than other membranes.

Nanostone E-Coat elements are shipped with a 0.5% solution of sodium metabisulfite and need to be flushed with RO/DI water prior to installation

### Physical Dimensions

Housing Length including ATD "A"	Element Length "B"	Element OD "C"	Permeate ID "D"
39.25 in (997 mm)	37.25 in (946 mm)	8.625 in (219.1 mm)	1.290 in (32.7 mm)

### Operating Parameters

Paint Flow vs. Pressure Drop*	Max. Inlet Pressure	Min. Outlet Pressure	Max. Permeate Pressure	Max. Feed Side Pressure Drop	Max. Operating Temp.**	pH Range**
80 gpm @ 28 psi (18 m <sup>3</sup> /h @ 2.0 bar) 84 gpm @ 30 psi (20 m <sup>3</sup> /h @ 2.2 bar)	70 psi @ 120°F (4.9 bar @ 49°C)	20 psi (1.4 bar)	5 psi (0.34 bar)	35 psi @ 120°F (2.4 bar @ 49°C)	64 psi @ 120°F (4.4 bar @ 49°C)	CIP: 1.5 - 10.5 OP: 2-10

\* Data based on DI water @ 77°F (25°C)

\*\* Consult factory for detailed cleaning instruction



# Unidesign Element Installation Guide

## Included in the Connection Kit

Item*	Description	Quantity	Material
1	End Cap Standard 8" / 1", top	1	1.4301 (silicone free)
2	End Cap Standard 8" / 0.5", bottom	1	1.4301 (silicone free)
3	Victaulic Coupling 8"	2	Steel / EPDM (silicone free)
4	Victaulic Coupling 2"	2	Steel / EPDM (silicone free)

\*Items 1-4 are for new installations only and not sold separately. Please contact us for more information

## Included in the Unidesign Element Packaging

Item	Description	Quantity	Material
6	<b>E-Coat Element</b> ***-8640AH-8X0D or ***-8640FH-8X0D	1	PVC (silicone free)
7	O-Ring for Permeate Adapter	2	EPDM
8	Glycerin Pack	1	Glycerin (silicone free)

## Unidesign Element Installation Guide

**Step 1:** Remove the flow meter/assembly from the housing top cap. Store in a safe place to prevent damage.

**Step 2:** Remove the 8" and the 2" Victaulic couplings from the top cap (*Items #3 and 4*).

**Step 3:** Lift the top cap (*Item #1*) off the Unidesign housing and store in a safe place.

**Step 4:** Remove the Victaulic coupling from the bottom cap and clean all seals (*Item #3*). Leave the 2" Victaulic Coupling installed, no need to remove (bottom clamp only).

**Step 5:** Remove the old Unidesign Element (*Item #6*). Be careful, Paint and Permeate will come out of the Element even if you drain it before.

**Step 6:** Eliminate the residual paint from the end caps and Victaulic clamps to make sure that they are completely clean.

**Step 7:** Carefully remove the new Unidesign Element from its storage bag.

**Step 8:** Replace the old "O"-rings on your top cap with the new "O"-ring supplied with your element and lubricate them with glycerin. A vial of glycerin is included with the shipment.

**Step 9:** Insert the Unidesign element into the bottom cap adjust the Victaulic seal in the middle between cap and element and close the Victaulic clamp completely.

**Step 10:** Carefully insert the top end cap connector into the permeate tube and tighten the bolts after putting the Victaulic seal in the right position.

**Step 11:** First close the 8" Victaulic clamp. Now, connect the 2" Victaulic Clamp of the top cap to the manifold.

**Step 12:** Return the flow meter/bypass assembly and tighten the union connections

